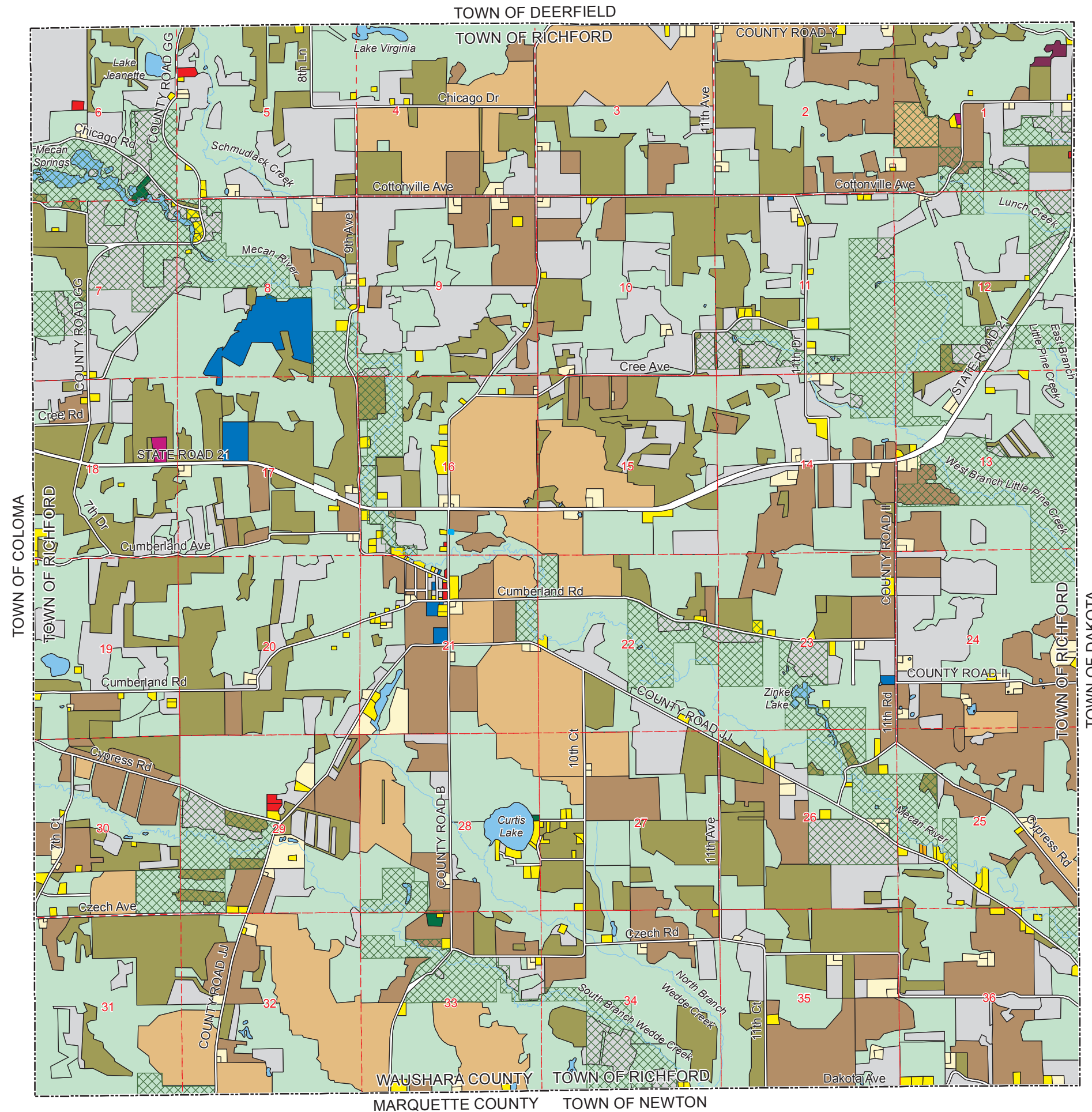
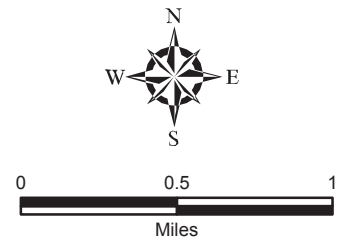


EXHIBIT 8-1 TOWN OF RICHFORD EXISTING LAND USE



- Single Family Residential
- Farmsteads
- Multi-Family Residential
- Mobile Home Parks
- Commercial
- Industrial
- Quarries
- Institutional Facilities
- Transportation
- Utilities/Communications
- Non-Irrigated Cropland
- Irrigated Cropland
- Water Features
- Recreational Facilities
- Planted Woodlands
- General Woodlands
- Open Other Land
- DNR Owned Land

Source: Land Use data updated by Town of Richford, 2001.
DNR Data provided by WI DNR, 2008.
Digital Base Data provided by Waushara County, 2008.



This data was created for use by the East Central Wisconsin Regional Planning Commission Geographic Information System. Any other use/application of this information is the responsibility of the user and such use/application is at their own risk. East Central Wisconsin Regional Planning Commission disclaims all liability regarding fitness of the information for any use other than for East Central Wisconsin Regional Planning Commission business.

Prepared By
EAST CENTRAL WISCONSIN
REGIONAL PLANNING COMMISSION-SEPTEMBER 2008