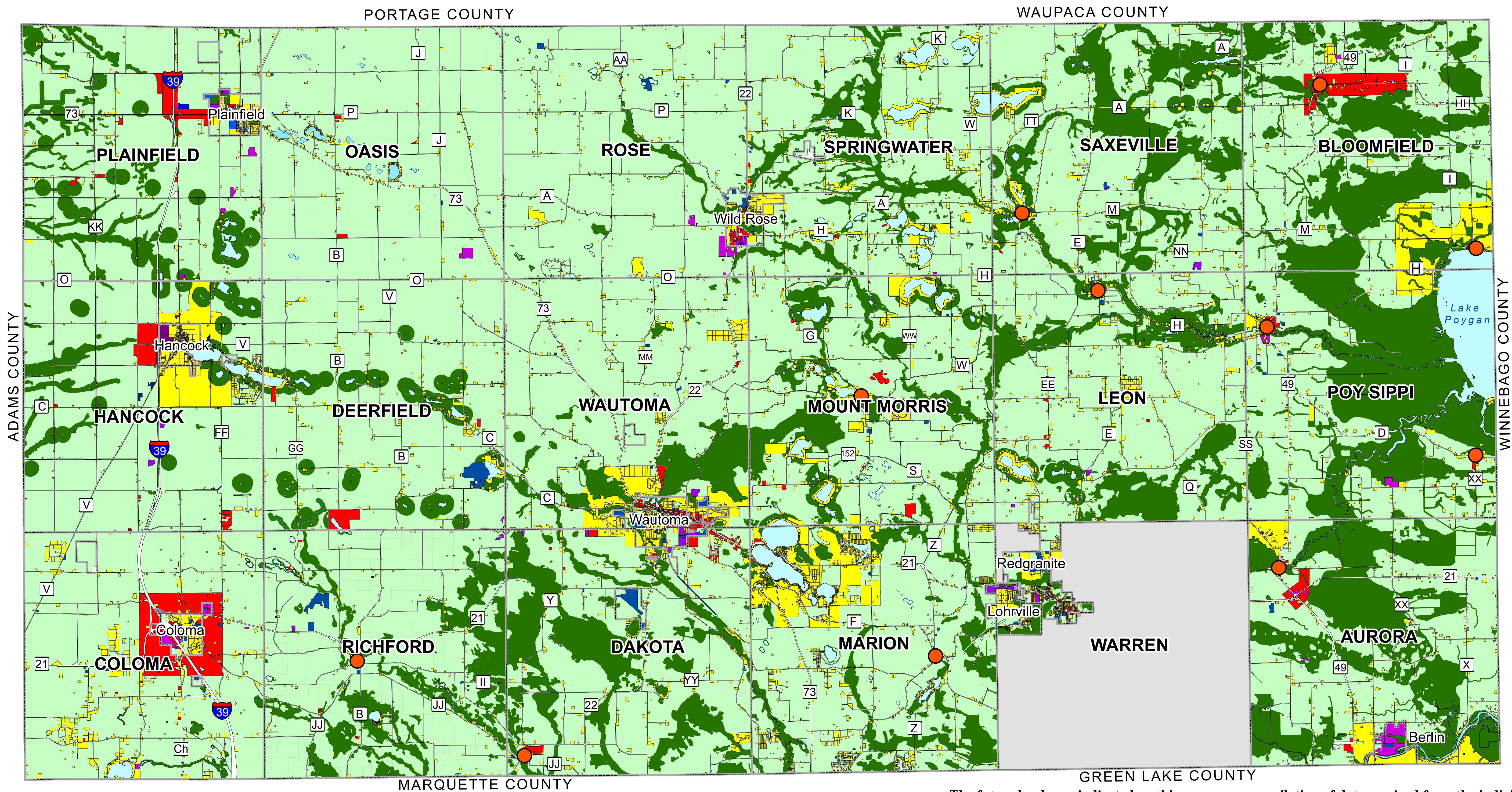


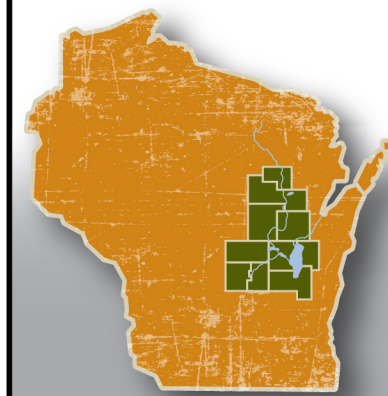
Waushara County Comprehensive Plan

Future Land Use - Exhibit 8-3, Map 2



- | | | |
|--|---|---|
| Residential | Agricultural/Natural Areas | Water Features |
| Industrial | Environmentally Sensitive Areas | Unplanned |
| Commercial/Mixed Use | Public/Institutional | Unincorporated Village/Mixed Use |

The future land uses indicated on this map are a compilation of data received from the individual municipal Comprehensive Plans, and are based upon the best and most current information available at that time, and is adopted as part of this county Comprehensive Plan with the premise that it is impossible to predict future growth and changes in development pressures with complete accuracy. Therefore, Waushara County anticipates that requests for land use changes will be made for areas outside of the future land use areas depicted on this map, and reserves the right to review these requests on a case by case basis, applying the actions and commentaries contained within this plan when acting on these requests along with all newly available information at the time the request is made. This map will be reviewed and amended periodically to reflect these changes in full compliance with all applicable state and local requirements.



Source: Base map provided by the Regional counties and Wisconsin.
This data was created for use by the East Central Wisconsin Regional Planning Commission Geographic Information System. Any other use/application of this information is the responsibility of the user and such use/application is at their own risk. East Central Wisconsin Regional Planning Commission disclaims all liability regarding fitness of the information for any use other than for East Central Wisconsin Regional Planning Commission business.

