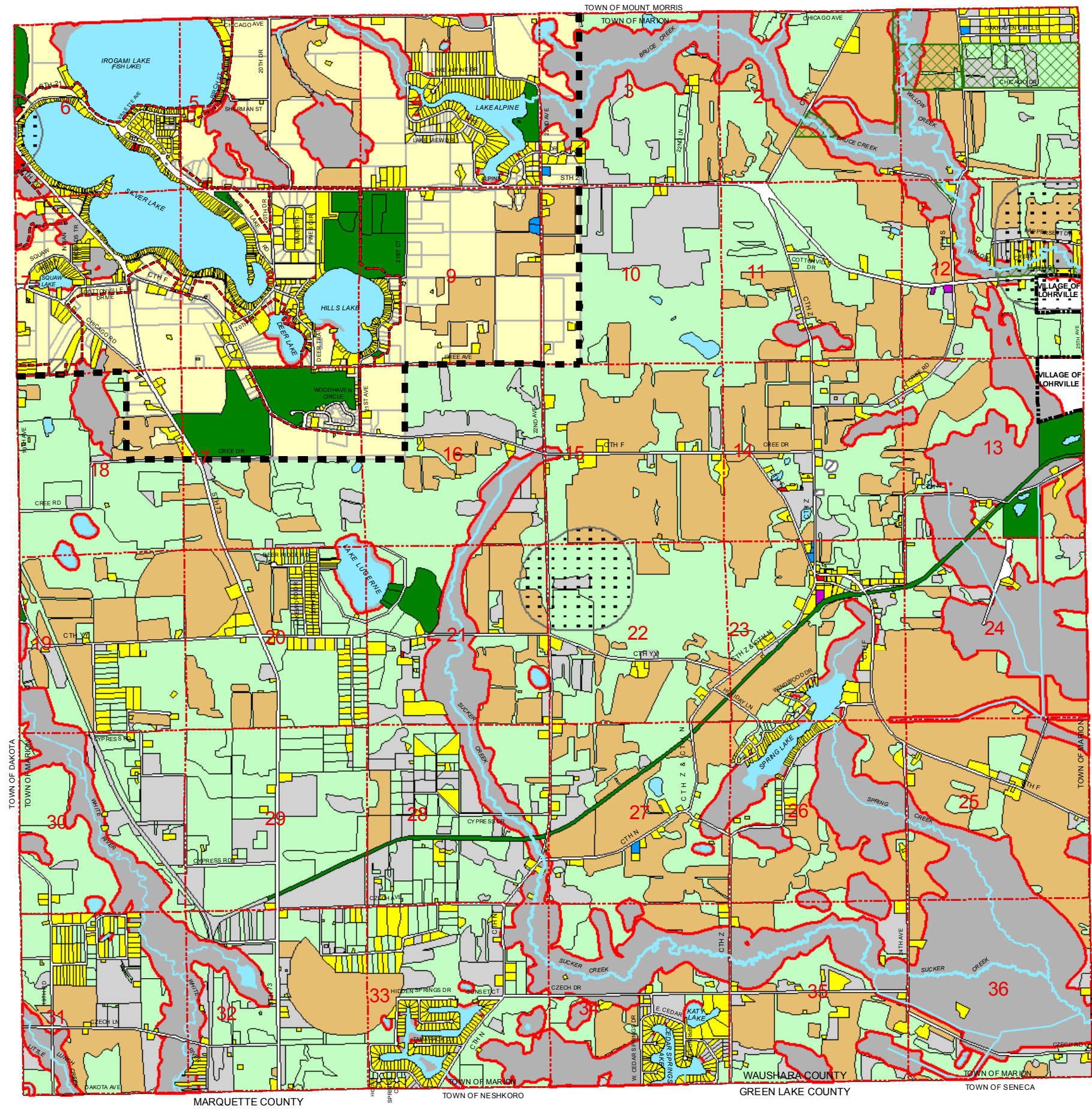


EXHIBIT 8-3 TOWN OF MARION FUTURE LAND USE



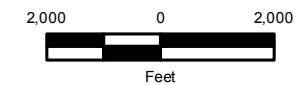
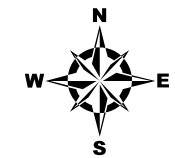
FUTURE LAND USE
 Future Residential

EXISTING LAND USE

- Residential (Single, Two Family, Farmsteads)
- Multifamily and Group Quarters
- Mobile Home Parks
- Commercial
- Industrial
- Quarries
- Institutional Facilities
- Transportation
- Utilities/Communications
- Agriculture
- Water Features
- Recreational Facilities
- Woodlands (including Silviculture)
- Natural Resource Protection Areas*
- Other Open Land
- DNR Owned Land
- 1200' Landfill Buffer
- Rivers, Streams and Drainage Canals
- Trout Streams
- Silver Lake SD Planning Area
- Silver Lake SD Service Area Boundary

Source: Digital Base Data provided by Waushara County.
 Land Use Created by ECWRPC.
 DNR Data provided by WDNR.

* 50' buffer around wetlands (5 acres or greater), floodplains, rivers, and lakes. 100' buffer around trout streams.



This data was created for use by the East Central Wisconsin Regional Planning Commission Geographic Information System. Any other use/application of this information is the responsibility of the user and such use/application is at their own risk. East Central Wisconsin Regional Planning Commission disclaims all liability regarding fitness of the information for any use other than for East Central Wisconsin Regional Planning Commission business.

Prepared By
 EAST CENTRAL WISCONSIN
 REGIONAL PLANNING COMMISSION-JULY 2006